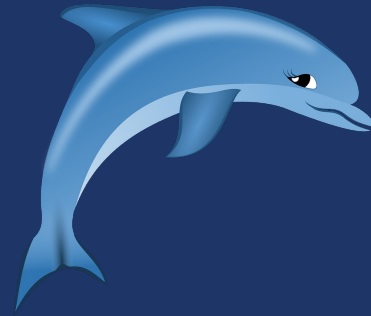


# Dolphin Days



IT'S A GREAT DAY TO BE A  
DOLPHIN!  
February 13, 2020

[Visit our website](#)

## UPCOMING EVENTS

**2/14** Red N.U.T Day

**2/17** Presidents Day-NO SCHOOL

**2/26** Ash Wednesday - Mass 10:00 a.m.

**2/28** Sports Recognition Program 2:00 p.m.

Dear Parents,

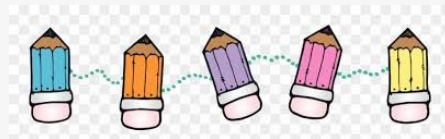
Your family is a valued part of our school community and it is our hope that you are planning to re-register your child(ren). In order to have the necessary information to plan the 2020-2021 scholastic year, we ask that our current school families complete this re-registration form and return it to the office As Soon As Possible.

Please include a **\$100 non-refundable DOWN PAYMENT PER CHILD** toward next year's tuition. (This fee is for returning students ONLY. Students who are new to the school will be charged a separate registration fee.)

Re-Registration is a crucial part of the finance committee's decision on any increase in tuition for the following school year. Please check the link below to access the forms.  
Thank you!

[Re-Registration Form](#)

## A Note From Mrs. Manns...



Kind words can be short and easy to speak, but their echoes are truly endless...St. Mother Theresa

We are continuing this week with our Renaissance Star Testing. Make-up days are scheduled for Thursday and Friday 2-13 and 2-14.

A reminder that tomorrow, Friday, 2-14 is the first official "Student fundraiser" for our MBS at Play playground. \$1.00 allows you to participate in a red N.U.T. day for Valentine's Day.

A big shout out to all of our HSA members, and those who generously donated, bid and/or attended our Soiree. It takes a village for success!

A reminder, Monday, February 17th is Presidents' Day-School is closed.

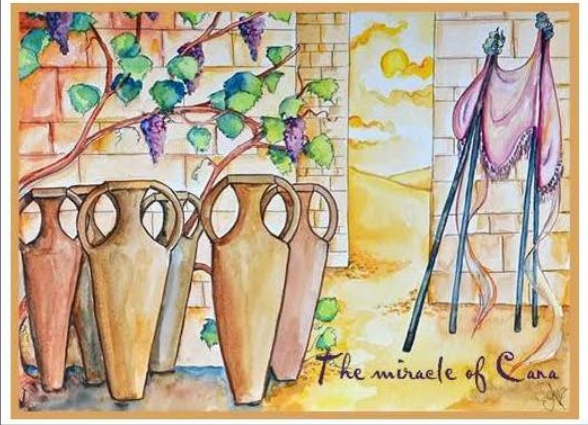
Enjoy your long weekend.

May God Bless all of our families!

It's a great time to be an MBS dolphin,

Mrs. Manns

*Believe and see the glory of God.*



## **Thank you, Thank you, Thank you!**

Thank you, MBS family and friends, for your help in making the Winter Soiree a huge success! Your donations, time, talent, attendance and bidding has ultimately made over \$20,000 for our school!

We had some Mystery Boxes that were unsold from the event. They are \$10 a box and include either an item donated from Park Place Jewelers, D.A. Kozma Jewelers or a hand crafted jewelry piece from one of our students. All unsold boxes are still for purchase in the front office.

Next week, we will release an HSA calendar for the Spring. If you have an idea for a fundraiser, dine & donate etc ... please reach out to us.

Please consider donating your time, talent, or treasure. If you have any questions or want to volunteer, please contact Nichole Behornar at [n.behornar@verizon.net](mailto:n.behornar@verizon.net). Joining HSA is a great way to get your FIP HOURS!!

Thank you for all your continued support!

## **RAINY DAY DISMISSAL**

On days when it is raining heavily and/or there is lightning at dismissal time, we will follow a rainy day dismissal procedure. On those days, students will be dismissed from the front doors of the school. Parents will line up in their vehicles in the regular

pick-up line. Please wait until the staff signals the cars to pull around to the front of the building where staff will call for the children to come out to their vehicle. We ask that parents make a sign (8.5" x 11") with the children's last names on the sign and place that sign on the right side of the vehicle's dash board.



## HIT THE BOOKS!

The Shorebirds **Hit the Books** reading Program for grades K-8 is underway. The program started on January 20th and concludes on Friday February 28th. During this time, each student is asked to read a minimum of 4 books, record each book on his/her bookmark and return the bookmark to their assigned teacher. The shorebirds will reward every student who completes the "**Hit the Books**" program with 2 FREE Upper Reserved Seat Vouchers for their school's designated night at the ballpark. These vouchers will be distributed to our school approximately 4 weeks prior to our game night.



The school that has the highest redemption percentage of Hit the Books tickets for the overall program will receive a **\$1000 donation** to their school. Also, the school with the second highest redemption will receive a \$500 donation. However we must meet a minimum of 100 bookmarks completed to qualify for the contest. Please encourage your student to read, read, read!



## Diocesan Tuition Assistance

**We are only a few weeks away from the deadline for applying for tuition assistance.**

Completed applications, including all supporting documentation such as tax forms, are due March 1st.

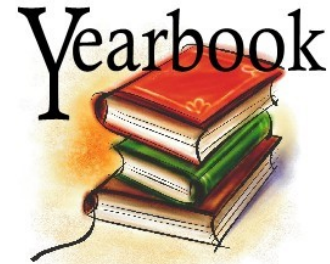
Applications that are submitted after that date will NOT be considered for assistance.

**PLEASE REMEMBER: ALL families who wish to be considered for MBS assistance must complete and submit the FACTS application.**

Parents must submit an application online to FACTS Grant & Aid Assessment for evaluation at [www.online.factsmgt.com/aid](http://www.online.factsmgt.com/aid). Please call 1-866-441-4637 if you have any questions.

## Yearbook Sale

There are a limited amount of yearbooks, so be sure to order yours today. Order forms were sent home last week.



### FROM THE NURSE:

We are in full swing of the flu season. **Doctors say the best way to prevent getting the flu is to get the flu shot.** It takes two weeks after receiving the vaccination for the body to fully develop the antibodies to fight the flu virus. Health officials state it is still **NOT TOO LATE** to get the flu shot. Multiple pharmacies and health clinics offer this vaccination for free or for a minimal fee. Some symptoms of the flu may be abrupt fever that can last 3-4 days, complaints of feeling achy and having the chills and unusual weakness and fatigue. If your child is ill and you suspect the flu, please have the child evaluated by their physician. Children who test positive for the flu virus are usually out of school for a week. If you do not have your child evaluated and they return to school too early, you are putting your child at risk for contracting other viruses and exposing other school children to the flu virus. If your child tests positive for the flu, please notify the school nurse before the student returns to school. As always we recommend thorough hand washing, getting enough sleep and eating correctly to help your body fight any infection.



## Counseling Corner

This week I focused on working with our 8<sup>th</sup> graders as High School is around the corner. We have been talking about the next step, service hours and planning. Let's pray for our 8<sup>th</sup> graders as they get ready for their journey ahead of them.

Parents, next week is Random Acts of Kindness Week. As a family, help your children spread kindness in your homes, community and school. Let's be the model of kindness and show them how spreading kindness is a ripple effect!



## Sports Corner

### **WINTER SPORTS RECOGNITION:**

We will recognize our winter athletes on **Friday, February 28th at 2:00pm** in the MBS Cafeteria. Parents are encouraged to attend. Please note the different start time!

### **WINTER COACHES & HELPERS- THANK YOU:**

MBS Athletics would like to thank everyone who helped with the winter sports season:

**Coaches:** Stephen King, Julie Delahanty, Melanie Wooldridge, Scot Eberly, Christa Gunther

**Special Helpers:** Daniel Genga (Scorer's Table, Ice Cream Sales), Julie Delahanty (Scorer's Table), Grace Short (Scorer's Table), Josephine Peranteau (Scorer's Table), Mark Record (Communication), Claire Peranteau (Concessions), Nichole Behornar (Concessions)...and many more!

### **RETURN OF BASKETBALL JERSEYS:**

Please return any remaining basketball jerseys. Inside the gym will be a grey box with a sign-off sheet. Please have your child place their washed jersey in the grey box and sign off their name.

### **GIRLS SOFTBALL- FIRST PRACTICE:**

Our girls softball team will have their first practice on Monday, March 23<sup>rd</sup> from 3:30-5:00pm. Our practices take place across the street at Showell Park on Field #1 (first field on the left as you enter the park).

### **MARINE CORPS LEAGUE- YOUTH PHYSICAL FITNESS:**

The Marine Corps League will conduct their annual Youth Physical Fitness (YPF) Challenge on Tuesday, March 3<sup>rd</sup>. Our 3<sup>rd</sup>-8<sup>th</sup> grade students should wear their P.E. uniform to school as they will participate in several different fitness challenges.

## Emergency Closings & Delays

Should it be necessary to delay, cancel or dismiss children early due to weather or any other emergency situation, parents will be notified by the School Messenger Notification System. Due to bus schedules, calls

informing of cancellation or delay will be made BEFORE 6:00 a.m. Please be sure that we have your current phone number at which you wish to receive the notification calls. You can always check WBOC or WMDT for closings.



## Parish News

### St. John Neumann

**Parents of 2<sup>nd</sup> Graders:** Our next gathering will be for our last newbie Parent ONLY session beginning 10 AM Sunday March 8<sup>th</sup> at MBS.

**Confirmation 2020:** Our next gathering will be a **retreat on March 7** beginning at 9:15AM in the SJN library. All candidates must attend.

### St. Jude the Apostle

A **Ladies Lenten Day of Reflection** has been scheduled for **Friday, March 27** from 9 a.m. to 3 p.m. **Marie Joseph**, the Executive Director of the *Legacy of Life Foundation* with 17-years in Catholic education, will be the day's highlighted guest speaker.

Participants will have the opportunity to attend Confession as well as Mass as well as time for group and personal reflection and adoration.

Retreatants will also be offered a light continental breakfast and boxed lunch.

Participants are required to register as space is limited and a suggested donation of \$25 is requested to defray the cost of the event. Registration info will be forthcoming in an upcoming bulletin.

Come join St. Jude's Garden Committee at the **Philadelphia Flower Show** on Monday, March 2nd. Tickets are \$70 and include the show, bus fare and driver tip. For reservations, please call Jean Stewart at 644-2890 Mon-Tues, 8:30-3:00 or Wed-Thurs, 8:30-12 noon. Bus will depart from St. Jude's parking lot in front of Christian Formation Bldg at 11 AM and return here about 8:00 PM.

### St. Mary Star of the Sea/Holy Savior

*Faustina*

**Messenger of Divine Mercy**

Performed Live by Jennifer Pagano on Sunday, March 1 at 6 p.m. at St. Mary Star of the Sea Parish Hall. Admission is \$10.00. Suitable for ages 13 and up. For tickets of more information, please call the parish office at 410-289-0652 or email [office@stmarystaroftheseaocmd.com](mailto:office@stmarystaroftheseaocmd.com).